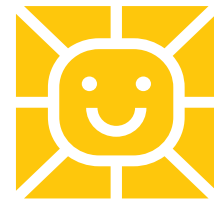


# DRISCOLL HEALTH PLAN MARTIN MIDDLE SCHOOL CIS FOOD PANTRY



## COME SEE US!

Hours of Operation: 2:00pm – 4:00pm  
Every 2nd & 4th Tuesday

**Martin Middle School**  
3502 Greenwood Drive  
Corpus Christi, TX 78416

## Here to help with the essentials you and your family need.

Come to our Community Connection Center to get help with important needs. Learn about local resources, and use our food pantry.

## Who qualifies?

Families with students of the following:

- Miller High School
- Martin Middle School
- Driscoll Middle School
- Allen Elementary
- Crockett Elementary
- Gibson Elementary
- Miller Metro Elementary
- Oak Park Elementary
- Rose Shaw Elementary
- Zavala Elementary

## For more information contact

Raquel Ramos, CIS Case Manager  
361-878-4690 ext. 31555



# DRISCOLL HEALTH PLAN MARTIN MIDDLE SCHOOL DESPENSA DE ALIMENTOS DE CIS



## ¡VEN A VERNOS!

Horas de operación: 2:00pm - 4:40pm  
Cada segundo y cuarto martes

**Martin Middle School**  
3502 Greenwood Drive  
Corpus Christi, TX 78416

## Estamos aquí para ayudarle con lo esencial que usted y su familia necesitan.

Venga a nuestro Centro de Conexión Comunitaria para obtener ayuda con necesidades importantes. Conozca los recursos locales y utilice nuestra despensa de alimentos.

## ¿Quién califica?

Familias con estudiantes de lo siguiente:

- Miller High School
- Martin Middle School
- Driscoll Middle School
- Allen Elementary
- Crockett Elementary
- Gibson Elementary
- Miller Metro Elementary
- Oak Park Elementary
- Rose Shaw Elementary
- Zavala Elementary

## Para más información contacte

Raquel Ramos, administradora de casos de CIS  
361-878-4690 extensión 31555

